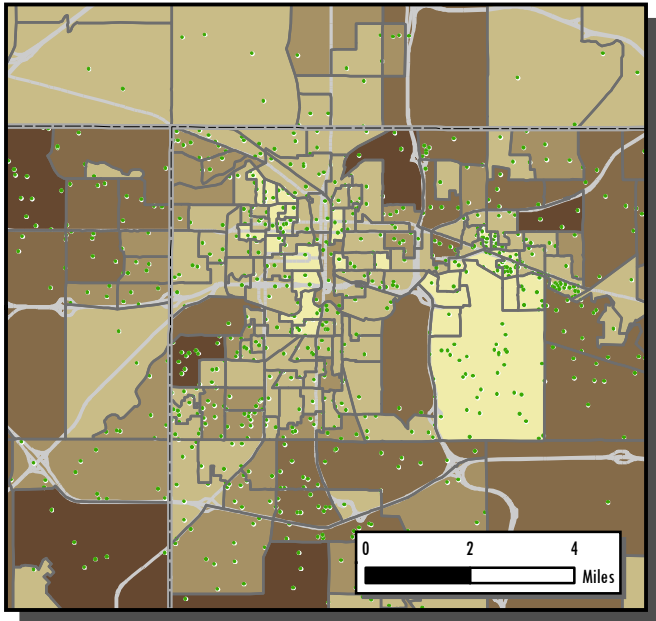


# Estimated Persons with a Sensory Disability and 65+ Population



Lansing Urban Area (zoomed in)

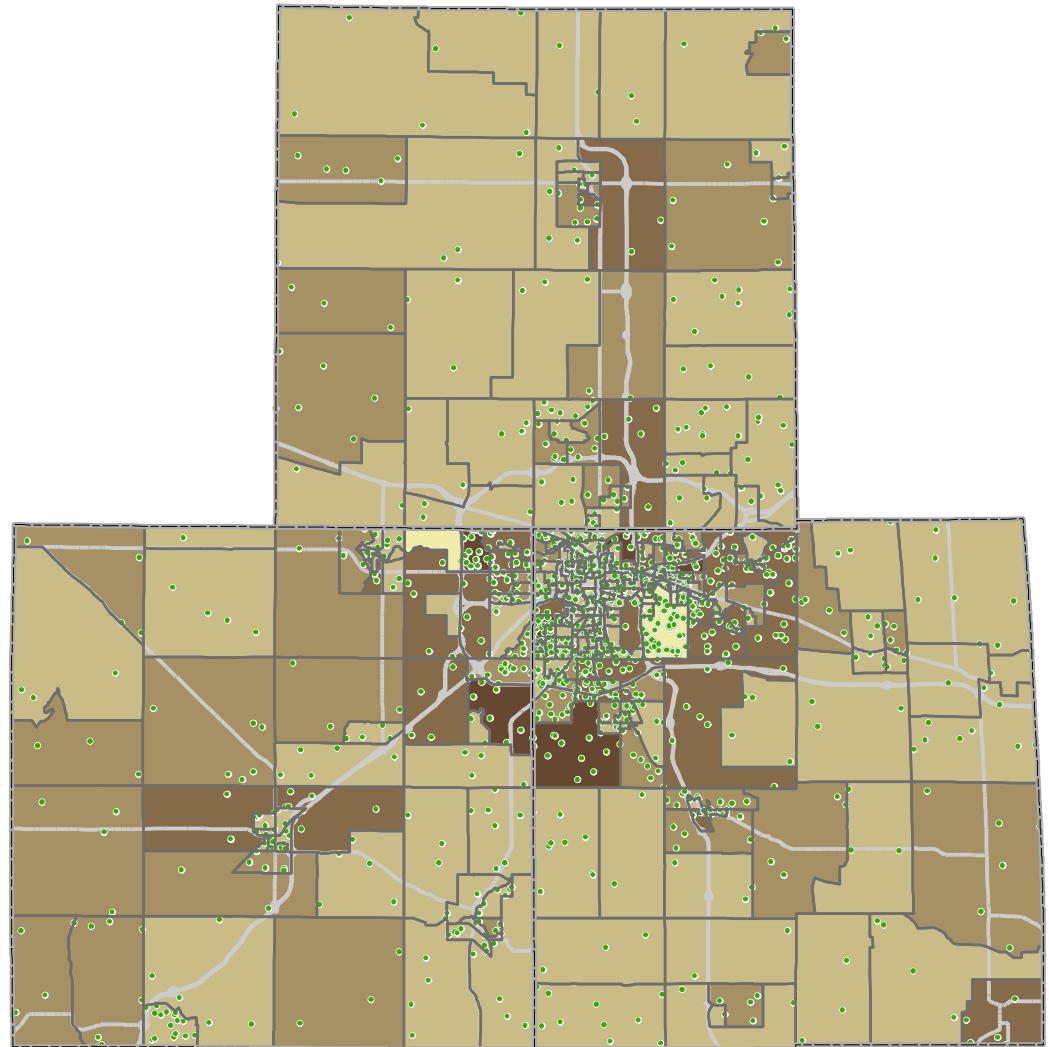
## Block Group Level

- 1 Dot = 20
- Sensory Disability
- State Roads

## 65+ Population

- 0 - 50
- 51 - 150
- 151 - 250
- 251 - 500
- 501 - 742

**Of the total Tri-County 2010 population over 5 years of age, 26,740 or 5.97% were persons with a sensory disability.**



0 10 20 Miles

